



GUILDCREST ESTATES



108 Mill Lane

Herne, Herne Bay, CT6 7JH

£350,000

Located in the charming village of Herne, this modern semi-detached bungalow on Mill Lane offers a delightful blend of comfort and convenience. With two spacious double bedrooms, this extended property is perfect for those seeking a tranquil retreat. The generous great size lounge and dining area provide an inviting space for relaxation and entertaining, while the modern fitted kitchen is equipped to meet all your culinary needs and you will also find an ultra modern Shower/WC.

One of the standout features of this bungalow is the lovely low maintenance south facing rear garden which is very private and offers stunning views over the picturesque countryside, allowing you to enjoy the beauty of nature right from your home. There are also two outdoor power sockets in the garden and one on the driveway. The property also boasts a well-maintained garage and ample off-road parking, accommodating up to four vehicles, which is a rare find in such a lovely village setting.

The location itself is a significant draw, offering a peaceful atmosphere while still being within easy reach of local amenities. Whether you are looking to downsize, seeking a first home, or simply desiring a serene place to live, this bungalow presents an excellent opportunity. With its modern features and idyllic surroundings, it is sure to appeal to a wide range of buyers. Don't miss the chance to make this charming property your new home.

Under section 21 of Estate Agents Act the seller is a friend of a member of staff at Guildcrest Estates

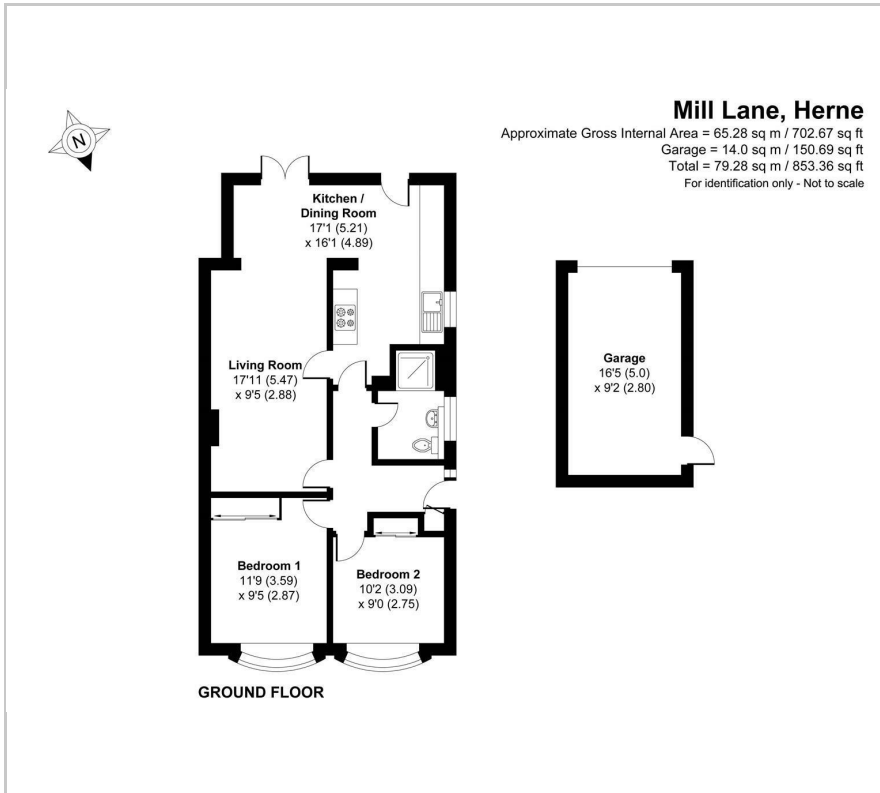
- Extended Bungalow
- 2 double bedrooms
- Great size Lounge/Diner
- Modern fitted kitchen
- Modern Shower room and WC
- Views over countryside to the rear
- Long driveway and garage
- EPC rating D

Viewing

Please contact our Manston Office on 01843 272 200 if you wish to arrange a viewing appointment for this property or require further information.



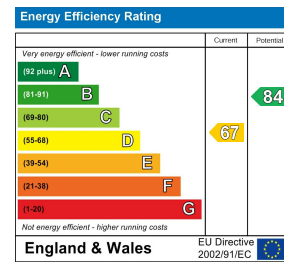
Floor Plan



Area Map



Energy Efficiency Graph



These particulars, whilst believed to be accurate are set out as a general outline only for guidance and do not constitute any part of an offer or contract. Intending purchasers should not rely on them as statements of representation of fact, but must satisfy themselves by inspection or otherwise as to their accuracy. No person in this firm's employment has the authority to make or give any representation or warranty in respect of the property.